



Comhairle Maoineachaidh na h-Alba
A' brosnachadh foghlam adhartach agus àrd ìre



Oilthigh
Ghlaschu

Developing a corpus- based framework for Scottish Gaelic learning and assessment

Nicola Carty

University of Glasgow

COMASAN LABHAIRT ANN AN GÀIDHLIG

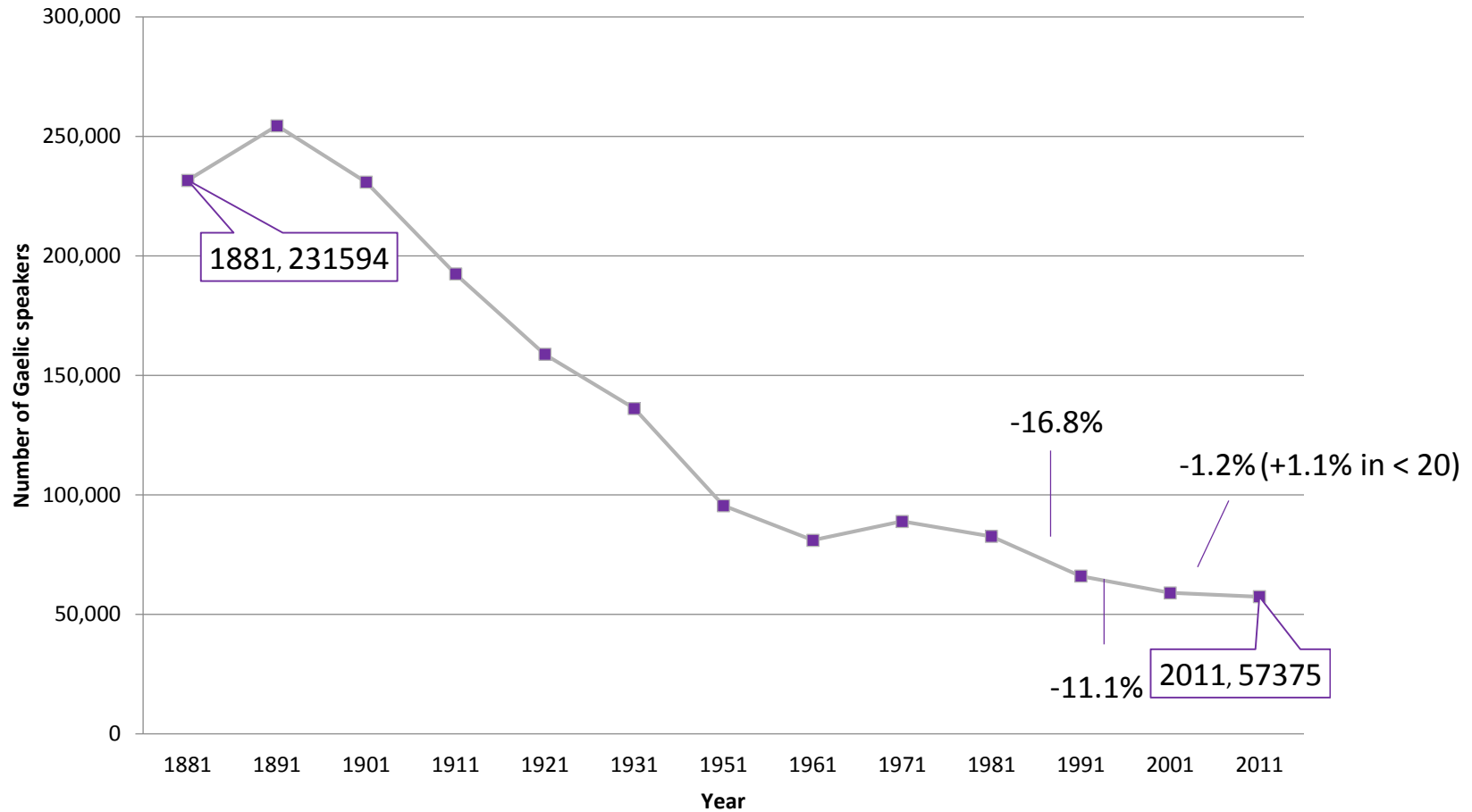
Commissioned by Bòrd na Gàidhlig, funded by BnG and the Scottish Funding Council

Brief:

- Design a framework linked to the CEFR and SCQF to “provide...a pathway from complete learner to fluency”
- Identify current course levels and align them to the framework
- Develop self-assessment tools

GAELIC IN SCOTLAND

87,056 (1.7%) have some Gaelic knowledge



GAELIC IN SCOTLAND

~2,992 adult L2 users

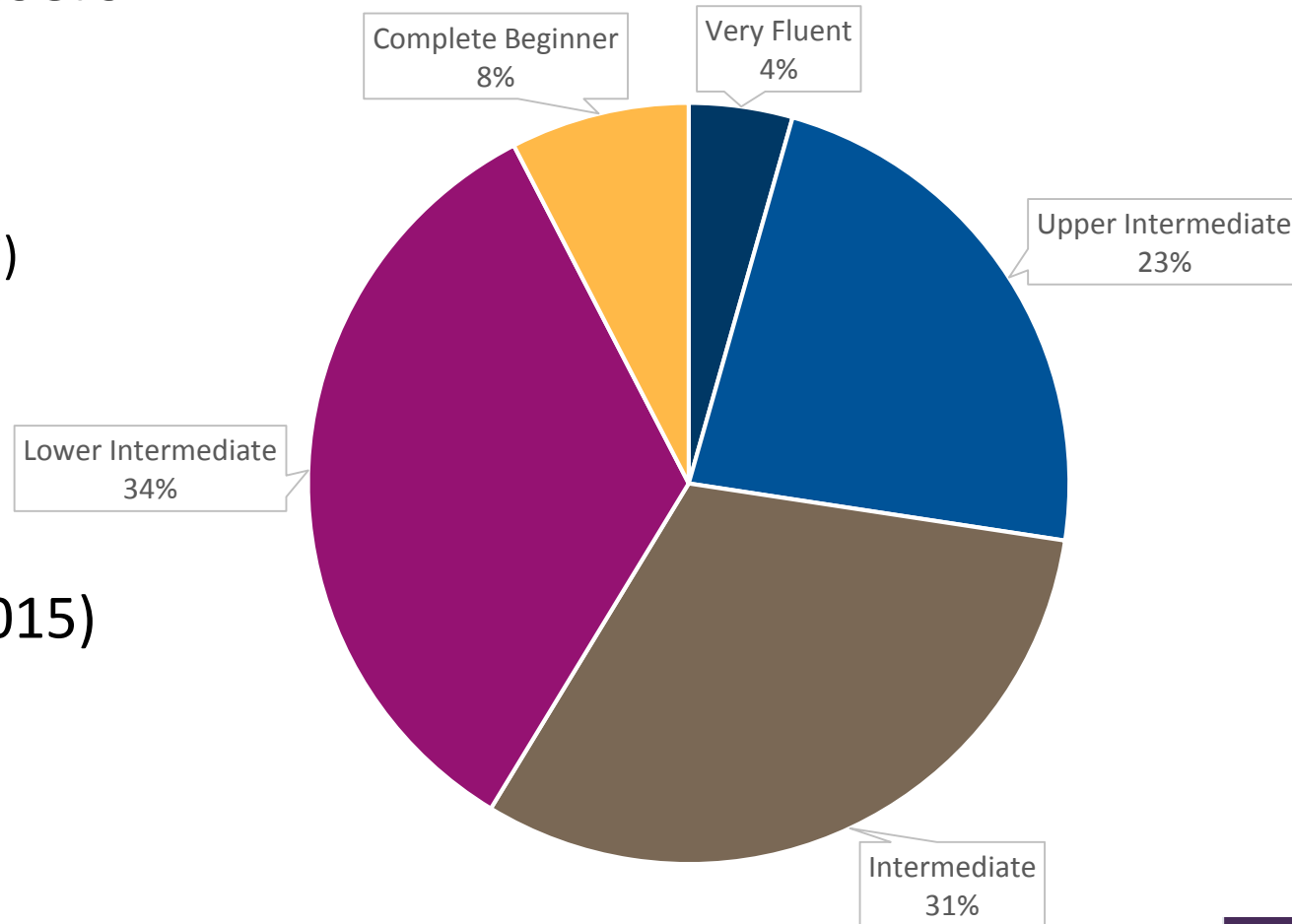
- 45% aiming for C2

(Taylor 2017)

- “The Eternal Intermediate”

(McEwan-Fujita 2015)

Self-reported spoken proficiency



APPROACH

Spoken corpus based

- 80 L2 users, 16 L1 users
- 3 communicative tasks, 3 experiments

Objective
proficiency
measures



CEFR-based
teacher
assessment



Profiles of
Gaelic skills
at different
CEFR levels

TASKS

Communicative tasks

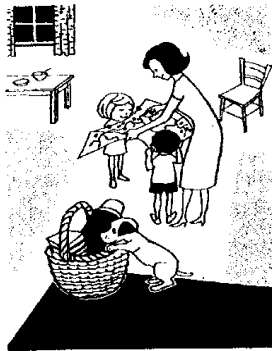
- Informal conversation
- Narrative/Picture description
- Argument task

Experimental tasks

- Information gap for C-questions
- Verb-echo question elicitation
- Elicited Imitation



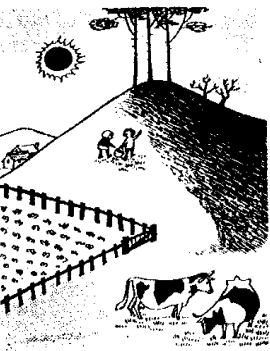
1



2



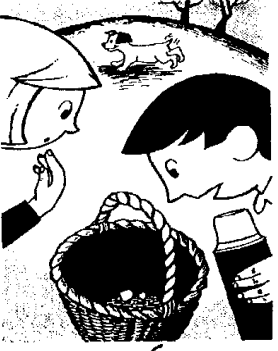
3



4

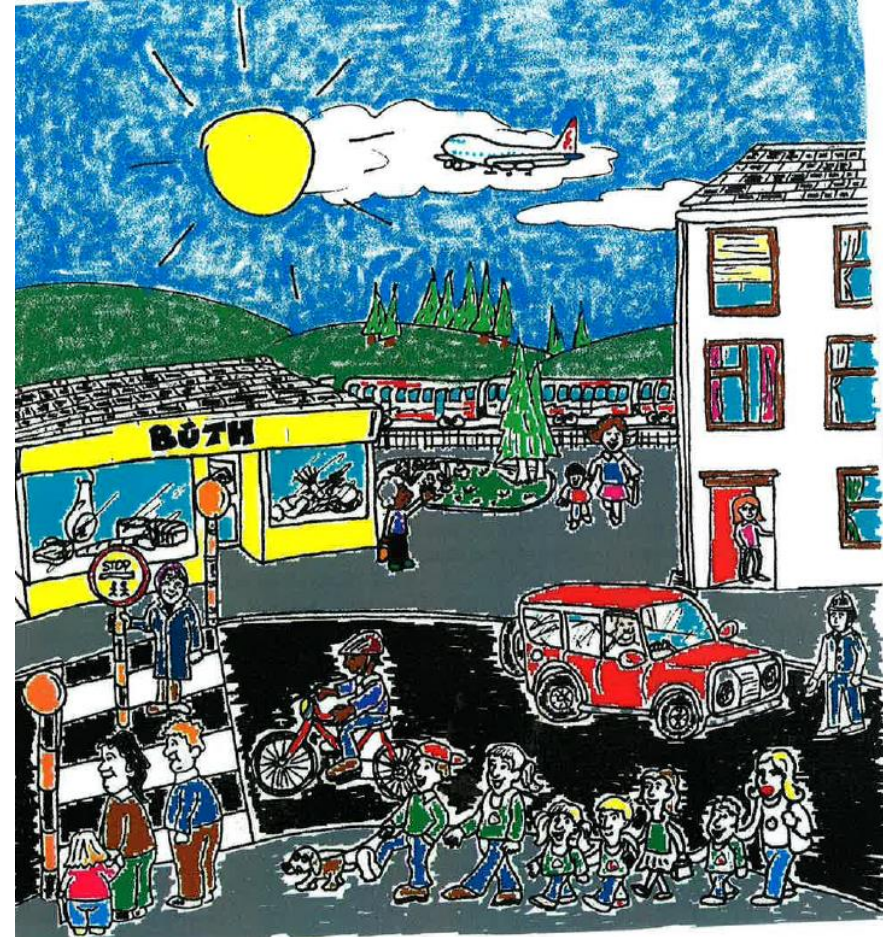


5



6

From Heaton, 1966 (Tavakoli & Foster 2008; Carty 2015)



Adapted from Milford, 2010

TASKS

Communicative tasks

- Informal conversation
- Narrative/Picture description
- Argument task

Experimental tasks

- Information gap for C-questions
- Verb-echo question elicitation
- Elicited Imitation

GAELIC TEACHER WORKSHOPS



EUROPEAN ASSOCIATION
FOR LANGUAGE TESTING
AND ASSESSMENT

School of Humanities | Sgoil nan
Daonnachdan

Discussed applicability of CEFR to Gaelic

Training based on the Manual for Relating Language

Examinations to the CEFR

Practiced rating Gaelic performances

CODING

Lexical diversity - D

Complexity

- Syntactic diversity (but PoS Tagger has a high error margin...)
- ML AS-unit
- SR

Accuracy

- Substantive verb/copula
- Tense and case

Fluency

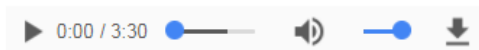
- Infrequent pausing and repairs
 - 1 min extract of monologues analysed for speed, breakdown, and repair fluency

RATING

Marker : Nicola Carty

File : LT2_1.mp3

1. Listen to the embedded audio file



2. Please fill in as appropriate

Range	Lower than A1 ▼
Accuracy	Lower than A1 ▼
Fluency	Lower than A1 ▼
Interaction (if applicable)	Lower than A1 ▼
Coherence	Lower than A1 ▼
Pronunciation	Lower than A1 ▼
Overall level	Lower than A1 ▼

Marker : Nicola Carty

Speaker : LT2

Overall grade

Lower than A1 ▼

Additional comments :

Submit

How many times did you listen to this recording?

1 ▼

Additional Comments :

Submit

ONGOING AND UP NEXT

Ratings analysis

Coding

Develop profiles and align framework to SCQF

Colleagues at Aberdeen to carry out assessment on classes currently available

Potential for work on written Gaelic, new resources, and a language exam

Tapadh leibh